

# MONTHLY MEMBERSHIP PROGRESS REPORT

LOCATION INDIA

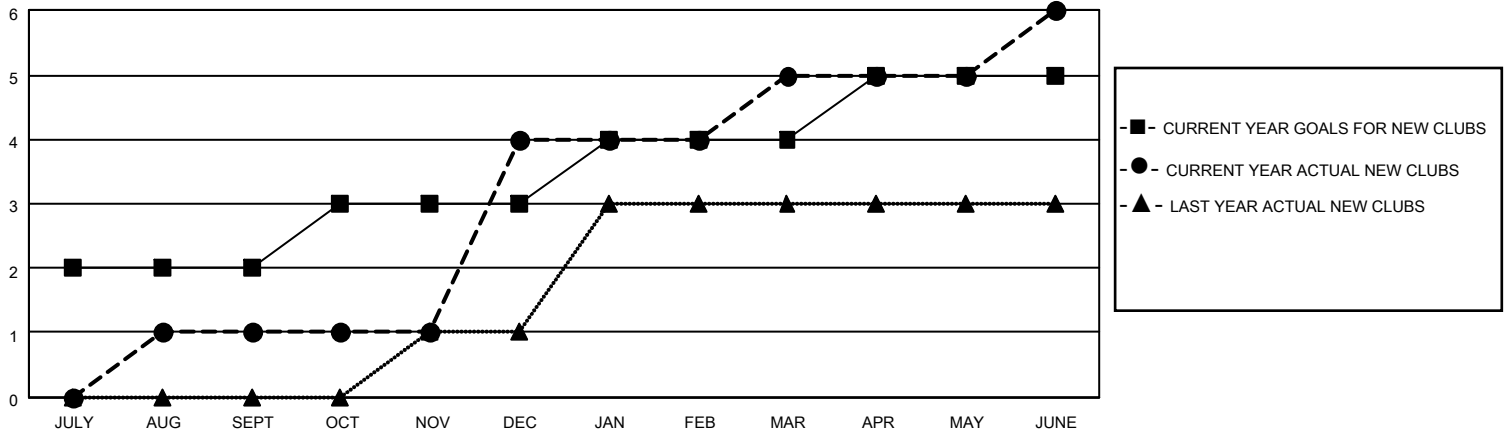
District 316 G

Results as of: 6/30/2021

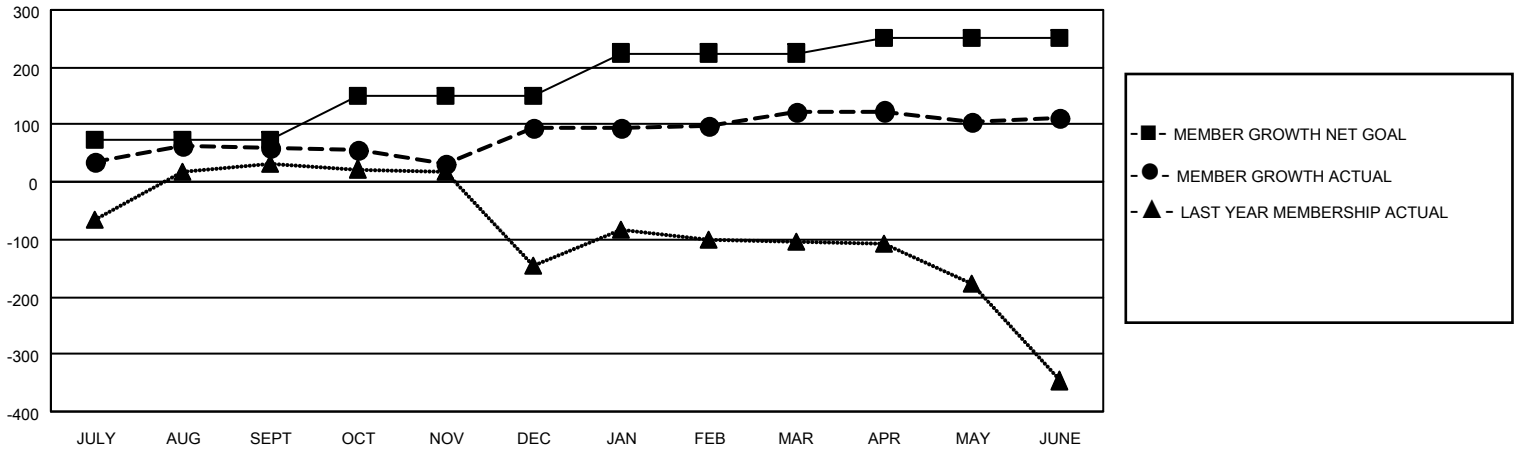
Clubs			
RESULTS FOR 2020-2021			
QUARTER	NEW CLUB GOAL	NEW CLUBS	DROPPED CLUBS
JULY/AUG/SEPT	2	1	1
OCT/NOV/DEC	1	3	0
JAN/FEB/MAR	1	1	0
APR/MAY/JUNE	1	1	0

Members			
RESULTS FOR 2020-2021			
QUARTER	MEMBER GROWTH NET GOAL	MEMBER GROWTH ACTUAL	DROPPED MEMBERS ACTUAL (including transfers)
JULY/AUG/SEPT	75	90	26
OCT/NOV/DEC	75	180	142
JAN/FEB/MAR	75	42	11
APR/MAY/JUNE	25	127	132

**GOALS AND ACTUAL NEW CLUBS CUMULATIVE**



**GOALS AND ACTUAL MEMBERS CUMULATIVE**



DROPPED CLUBS: 1	
DROPPED MEMBERS	
DECEASED	50
CLUB CANCELLED	0
OTHER	261
<b>TOTAL</b>	<b>311</b>

52 CLUBS OF 71 ADDED 1 OR MORE NEW MEMBERS

[CLICK HERE FOR CUMULATIVE MEMBERSHIP DATA](#)

<u>GENDER DISTRIBUTION</u>	
MALE	2,046 (81.22%)
FEMALE	473 (18.78%)

TOTAL FAMILY UNIT MEMBERS	1,034
FAMILY MEMBERS PAYING HALF DUES	643